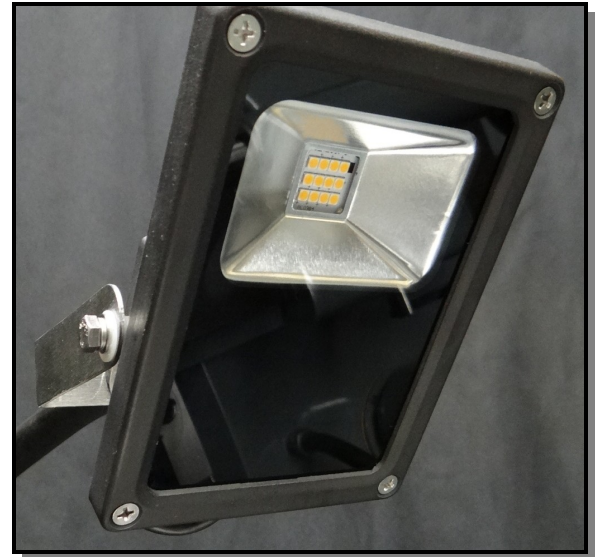
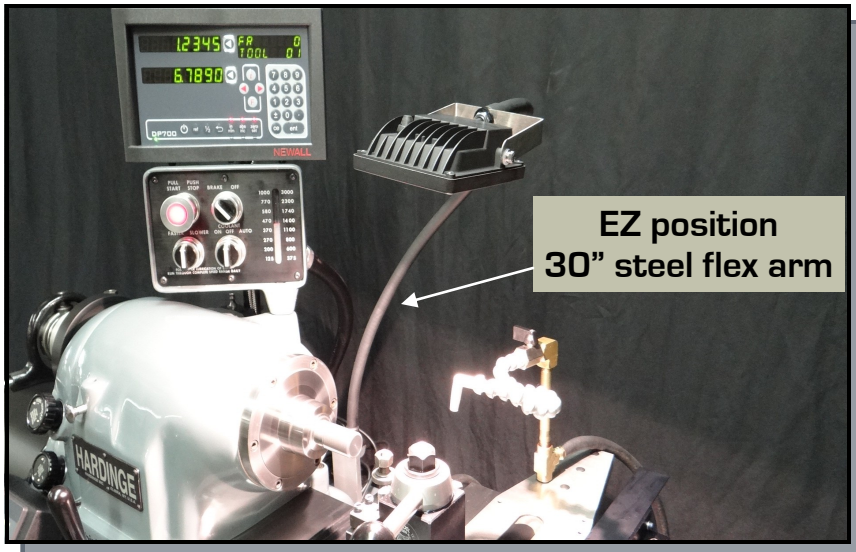


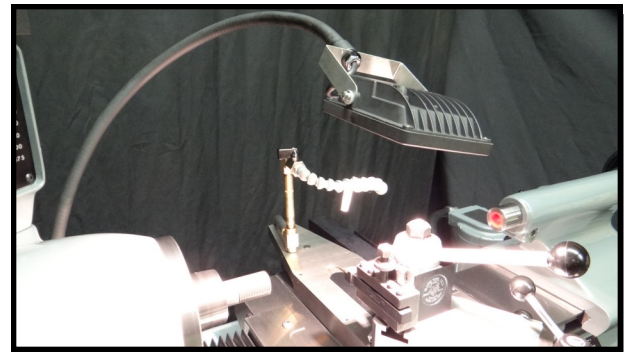
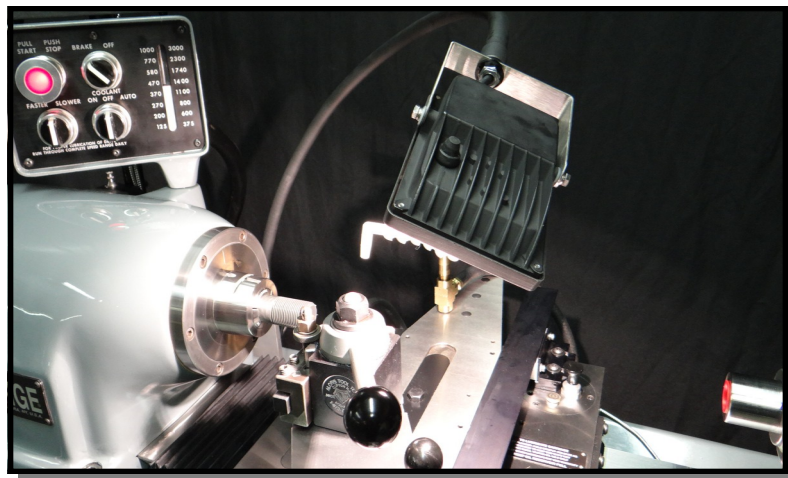
# Hardinge HLV

## 15W LED work light kit

Effective and energy efficient low heat LED lighting



CE and IP65 rated fixture  
Easy to clean sealed glass face  
4" x 6" x 1.5" dimensions



- EZ mounting design, no holes to drill or tap
- Long 30" steel flex arm for stay-put positioning
- Rotating and tilting stainless steel support bracket
- Sealed pushbutton on/off switch located on head
- Improved machinist efficiency with better lighting
- 15W low heat output LED approx. to 75W halogen

15W LED Light kit: \$ 275. *made in USA*

**Babin Machine Tool** 508-588-9189

Contact: [sales@BabinMachine.com](mailto:sales@BabinMachine.com)

[www.babinmachine.com](http://www.babinmachine.com)

